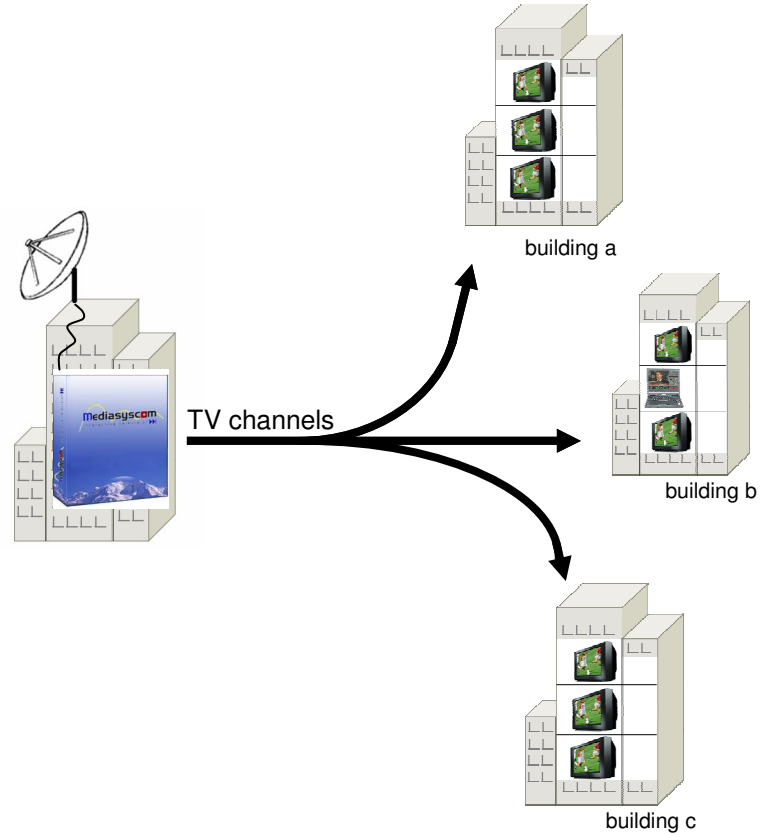


**TVZeeGateway** is a broadcasting gateway software solution which delivers television channels on TV sets and computers.

Ideal to broadcast TV channels to multiple user, this software makes available all TV channels available at gateway output to:

- Computers
- DVD players
- IP STB's
- Flat screens
- Networked devices



### Advantages:

- Flexibility and scalability of a software solution.
- Solution for clear and scrambled channel
- Optional scrambling of the output stream.
- Capture of various sources (satellite, DTT, ASI...).
- Remote configuration and administration via a Web browser.
- Instant setting and startup.
- Pass-through of EPG data
- **TVZeeDACServer** : time shifted PVR function on live TV (add-on software).

Making the bridge between television world and IP network, TVZeeGateway enables to get rid off unflexible coaxial infrastructures.

It allows to broadcast digital TV on IP networks without any charge of architecture.

### **Application : TV broadcast to**

- **Hotels**
- **Hospitals**
- **Companies**
- **Airports**
- **Universities Campus**
- **Condominium**
- **Dealing room**
- **Home networks ....**

Radio and TV channels broadcast

Visualisation on PC with **TVZeePlayer**, universal video player

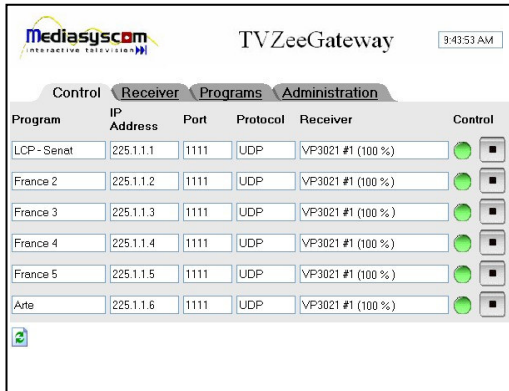
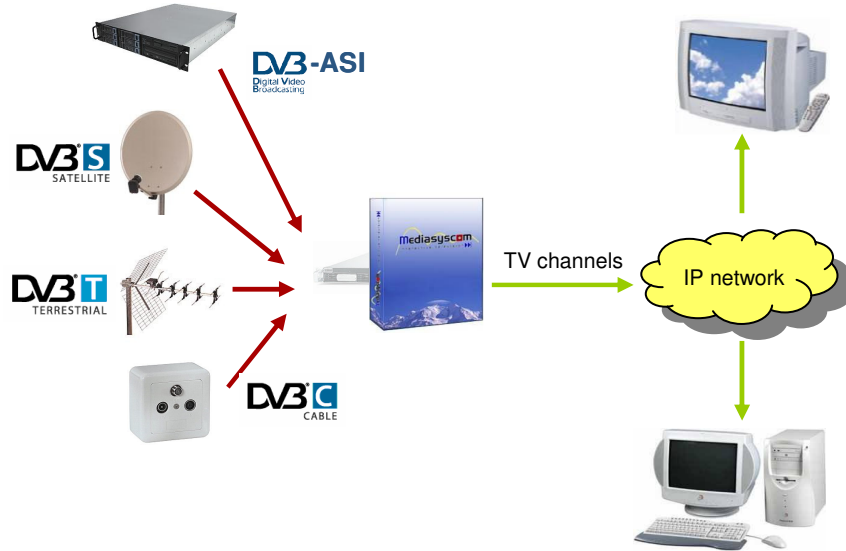
Visualisation on TV sets and flat screen with IP set top boxes

**TVZeeGateway** is a broadcasting gateway software solution which delivers radio and television channels from various DVB sources on IP network

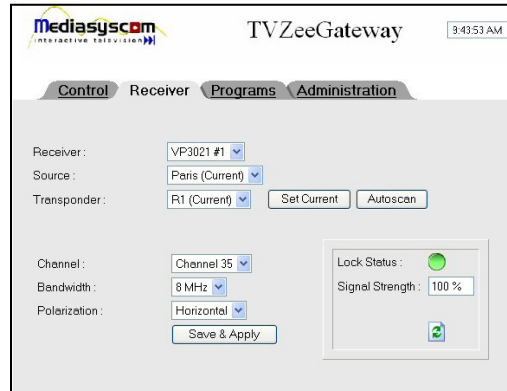
This easy-to-use solution, can manage a full MPTS stream.

The output can be configured to provides the best solution to fit operator's requirements :

- Passthrough function
- Multi channel descrambling
- MPTS Demultiplexing and SPTS remultiplexing
- PID filtering
- Transrating: data rate conversion
- IP transport, DSL and cable broadcast



Channel control



Multiplex configuration



Player TVZeePlayer

### Technical specifications:

#### Input:

- DVB-C : DVB-Cable / ETSI 300 429
- DVB-S : DVB-Satellite / ETSI 300 421
- DVB-T : DVB-Terrestrial / ETSI 300 744
- DVB-ASI : DVB-Asynchronous Serial Interface, EN 50083-9

#### Management:

- Local or remote control by browser
- Reception parameter
- Address allocation
- PID filtering
- DVB-SI tables (ETSI 300 468)
- Automatic programs scan
- Transrating (bitrate conversion)

#### Output:

- MPEG-2 TS stream on IP

#### Transport & Protocols:

- ISO/IEC 13818-1, MPEG2-TS - MPTS/Multiple SPTS
- Unicast and multicast
- UDP/IP (RFC 768), RTP/UDP/IP (RFC 1889, 2038)

#### Options:

- N+1 Redundancy
- Scrambling of the output stream.

#### Options with add-on software:

- **TVZeeTranscoder** : MPEG-2 / MPEG-4 transcoder
- **TVZeeDACServer** : PVR functions on Live TV